

Back Rank

A back rank checkmate is when a Queen or Rook attacks the King along the eighth rank for Black or the first rank for White. The king is blocked and trapped on the 8th rank.

Diagram I
Shows the Back Rank Checkmate a move away before it happens.

Diagram I

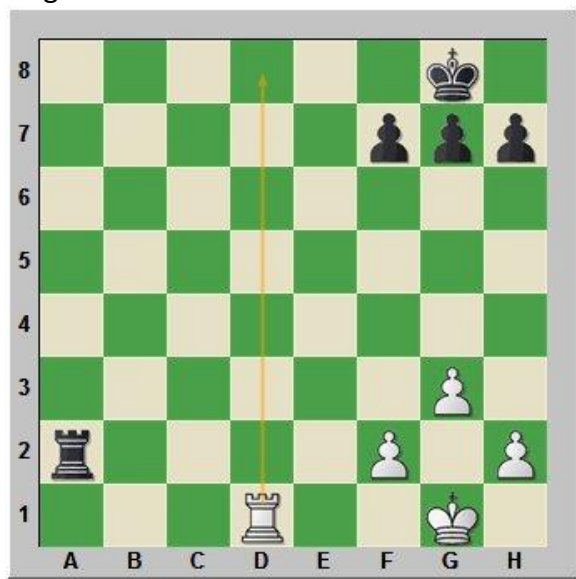
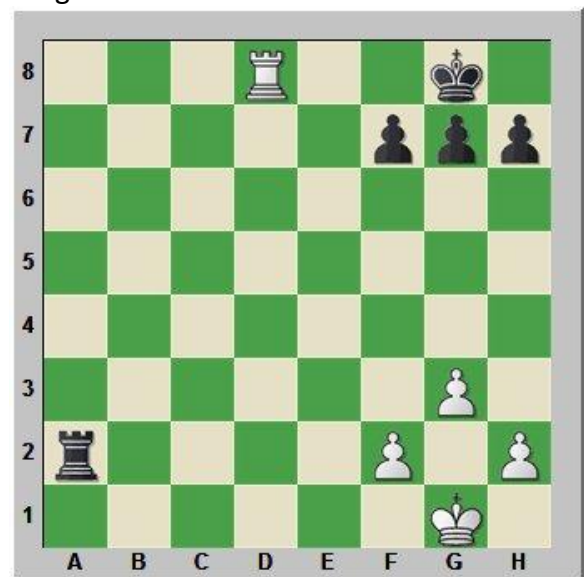


Diagram II



Shows the Back Rank Checkmate at it happens

Diagram 1



Diagram 2



Diagram 3

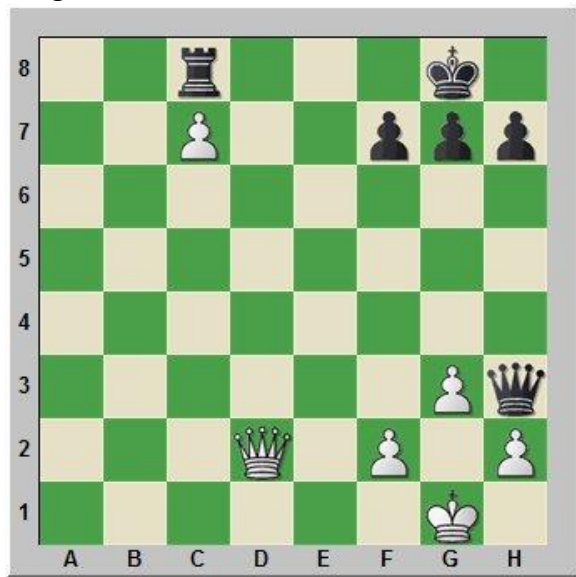


Diagram 4

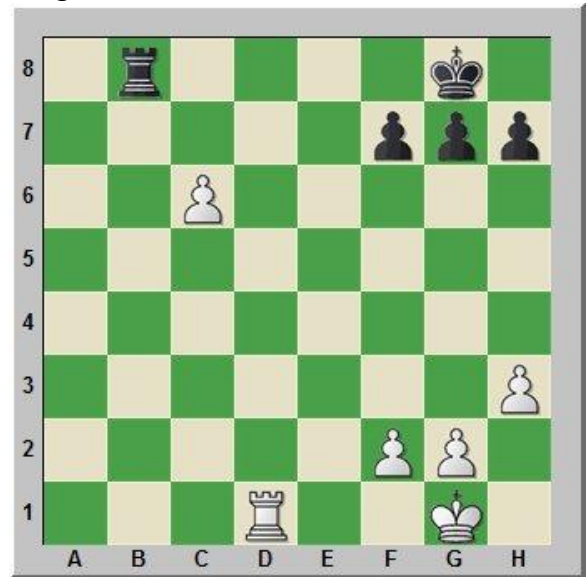


Diagram 5

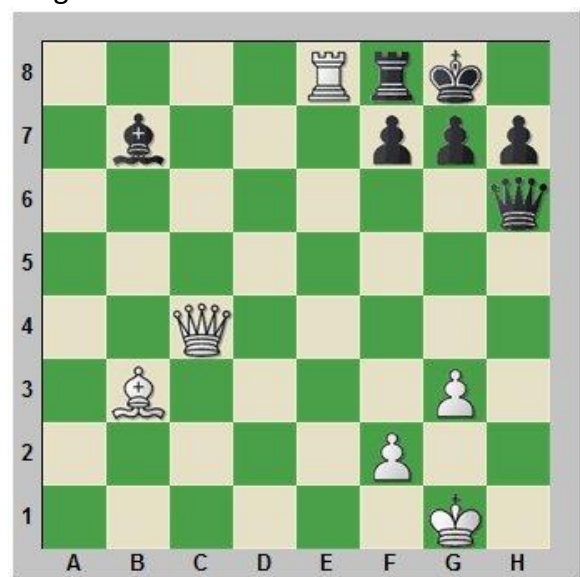


Diagram 6



Diagram 7



Diagram 8

