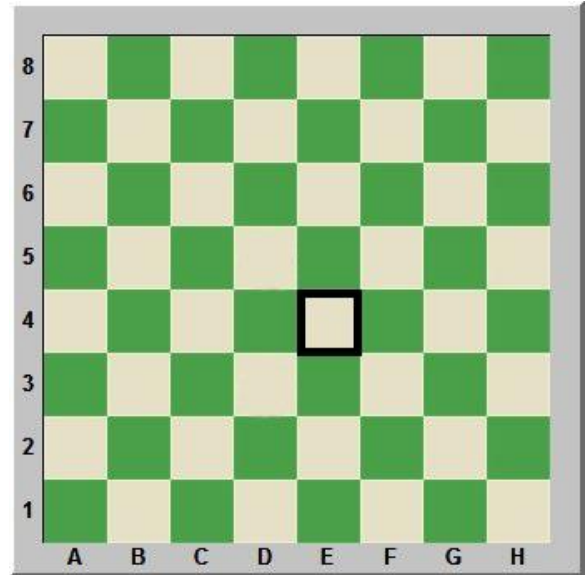
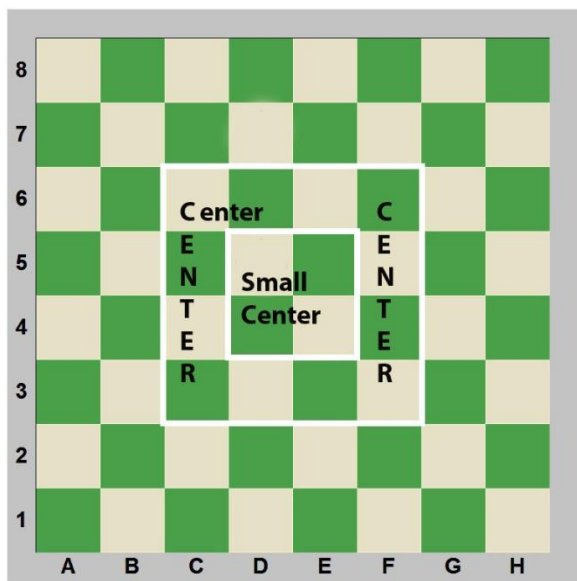


Chess Board

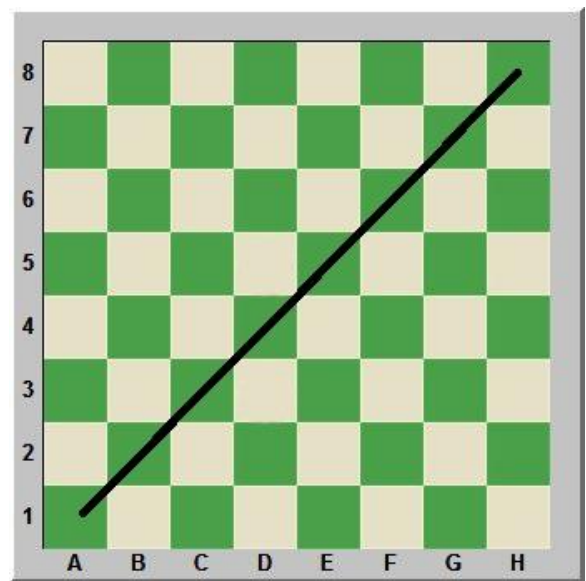


Square

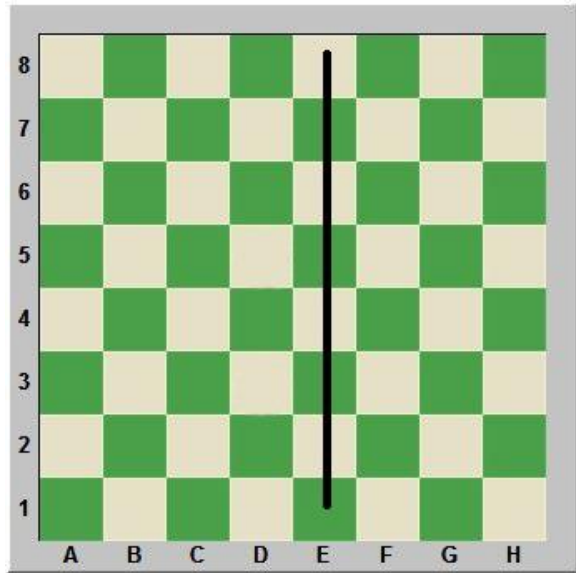
The e4 square



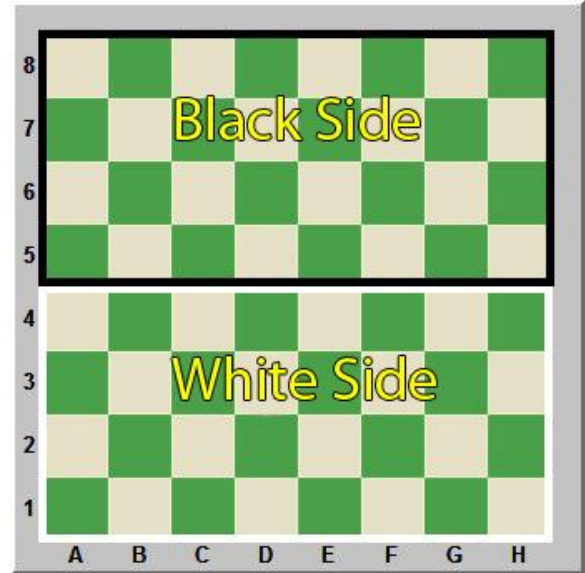
Central squares



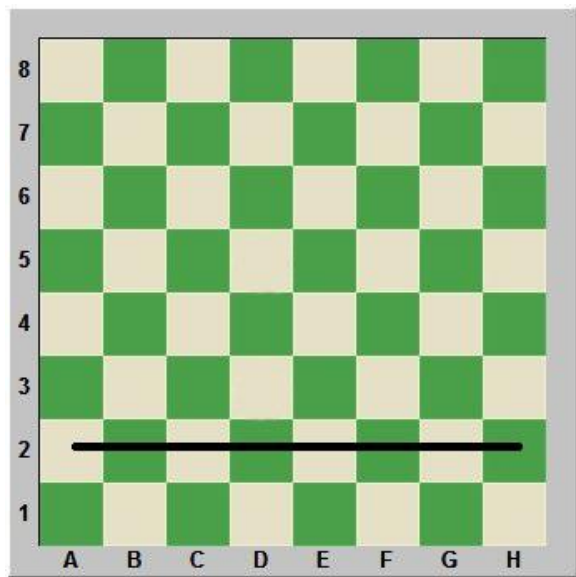
Diagonal



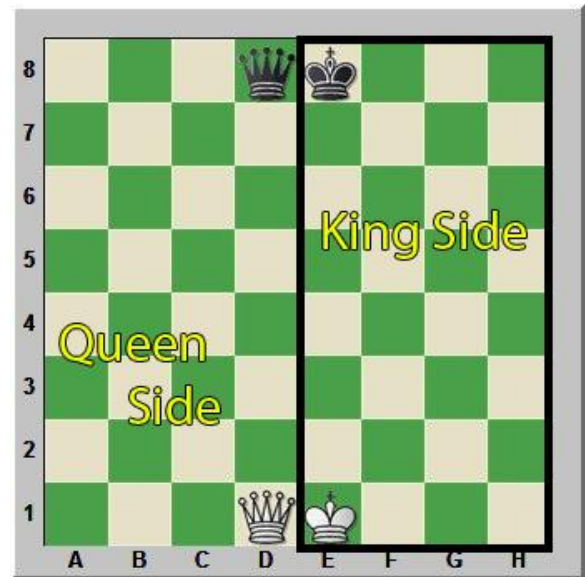
File
The E-file



White side and Black side



Rank
The 2nd rank



Board Showing
The King side and the Queen side

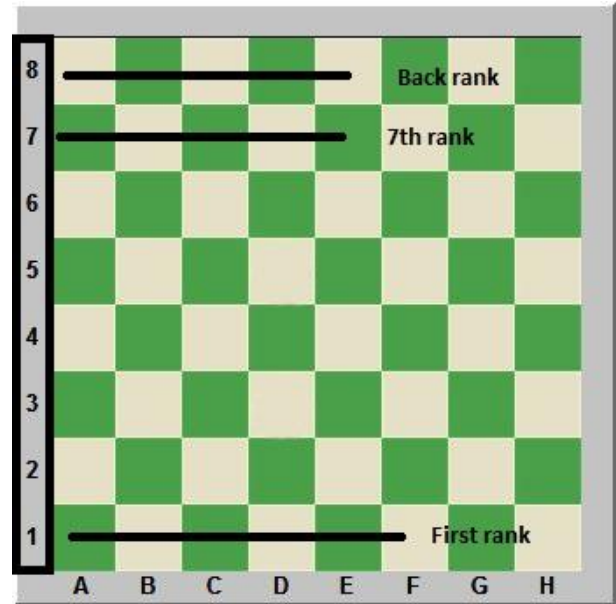
Chess Notation

This system, known as algebraic notation, is used all over the world.

Every square on the board is assigned a name in lower case letters.

The numbers on the side from 1 to 8 are numbered from White's side of the board and the letters denoting the files start on White's left.

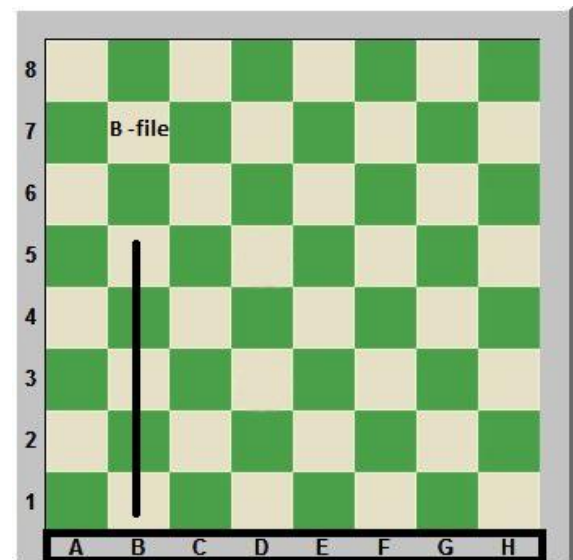
Pieces are designated by capital letters. Pawns have no specific designation but are referred to by the algebraic square they are on.



The ranks are numbered from White's side of the board

Starting with number 1 all the way to number 8

8	a8	b8	c8	d8	e8	f8	g8	h8
7	a7	b7	c7	d7	e7	f7	g7	h7
6	a6	b6	c6	d6	e6	f6	g6	h6
5	a5	b5	c5	d5	e5	f5	g5	h5
4	a4	b4	c4	d4	e4	f4	g4	h4
3	a3	b3	c3	d3	e3	f3	g3	h3
2	a2	b2	c2	d2	e2	f2	g2	h2
1	a1	a2	a3	a4	a5	a6	a7	a8
	A	B	C	D	E	F	G	H



The letters denoting the files start on White's left side.