

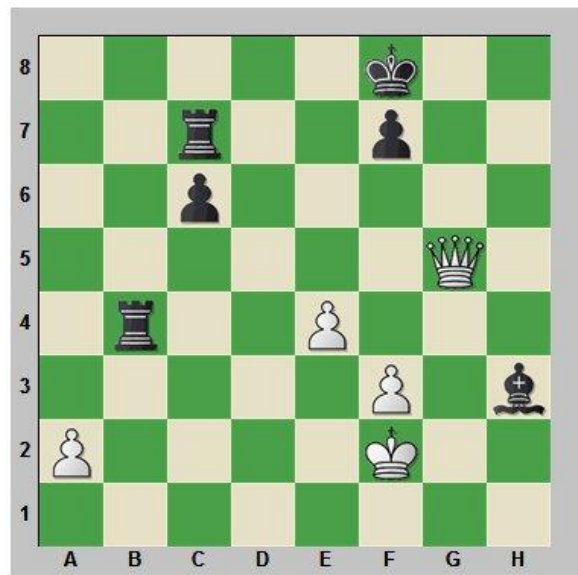
# Double Attacks

A **Double Attack**, when a chess piece is attacking two pieces or pawns and weak squares at the same time.

*Tip: Attack the king with a check and an unprotected piece to make a Double Attack  
Make a checkmate threat and a piece that is unprotected*

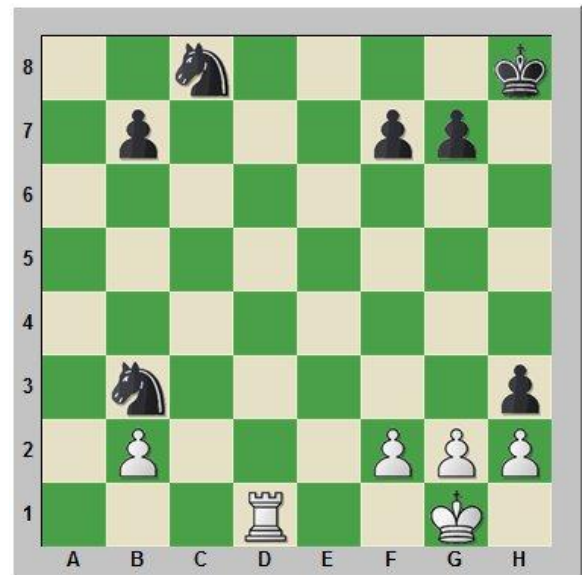
**Mark each square with an "X" to show the Double Attack**

Double Attack 1



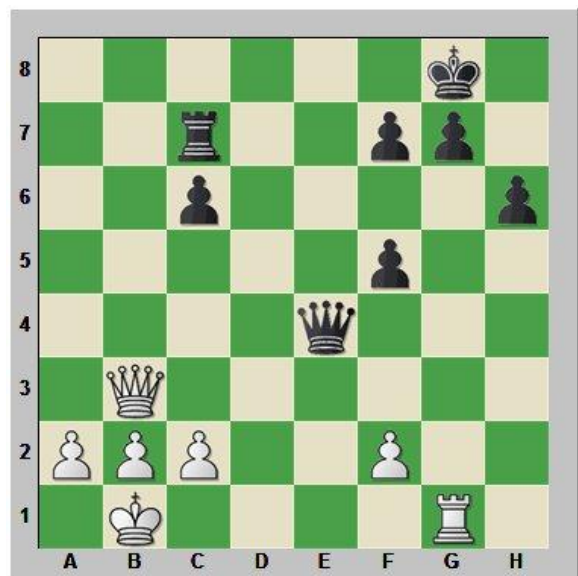
Find 3 Double Attacks?

Double Attack 2



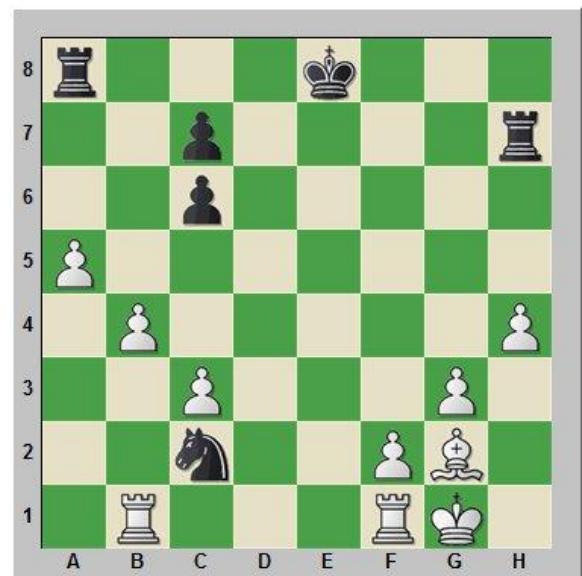
Find 3 Double Attacks with the Rook

Double Attack 3



Find 2 Double Attacks?

Double Attack 4



Find 2 Double Attacks?