

KNIGHT FORK

A knight fork is when a knight is attacking two or more enemy pieces.

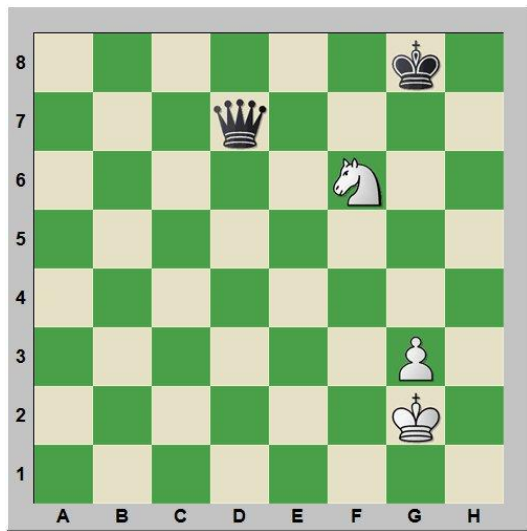
Tip: Look for a check and piece that has more value than the knight to attack and make a Knight Fork

*Sacrifice a piece to create the position
All the enemies pieces has to be in the same color of the knight last jump*

Knight forks can be avoided by taking the following precautions:

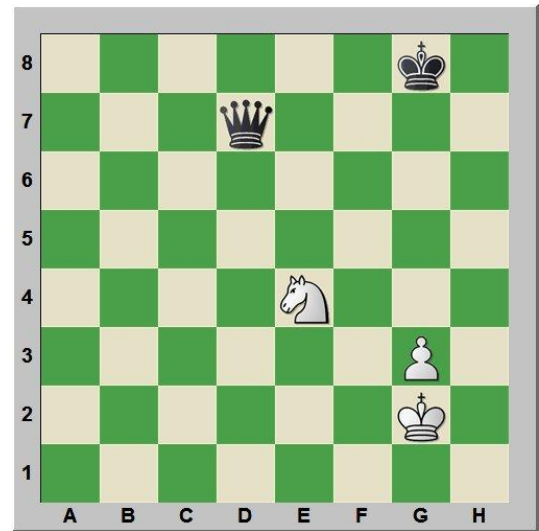
1. Keep your queen (rooks) and king in different colors.
2. Don't allow checks.
3. Don't leave unprotected pieces or squares.

Fork 1



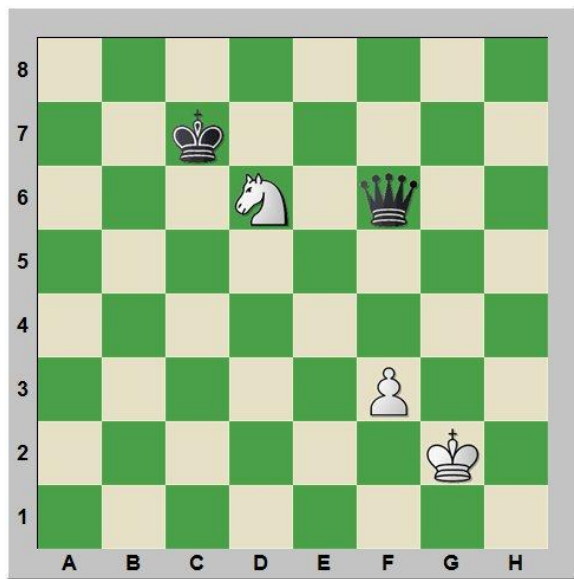
Knight Fork

Fork 2



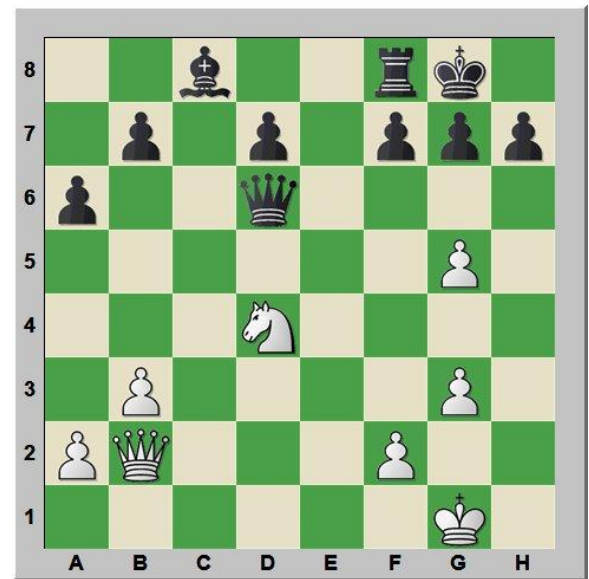
Before a Fork

Fork 3



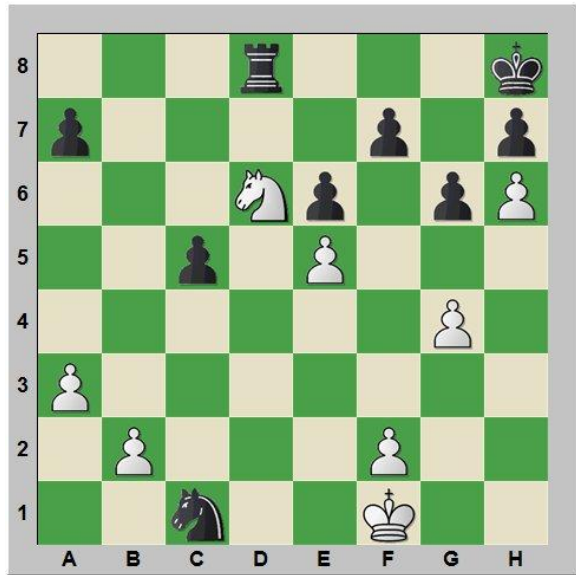
Find a Knight Fork in one move?

Fork 4



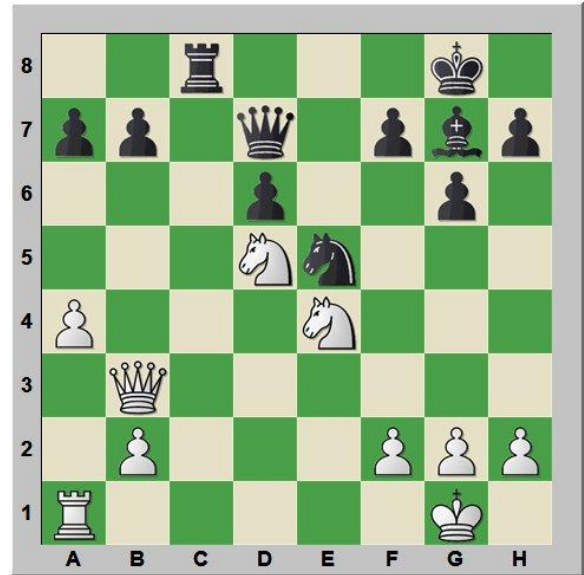
Find a Knight Fork threat?

Fork 5



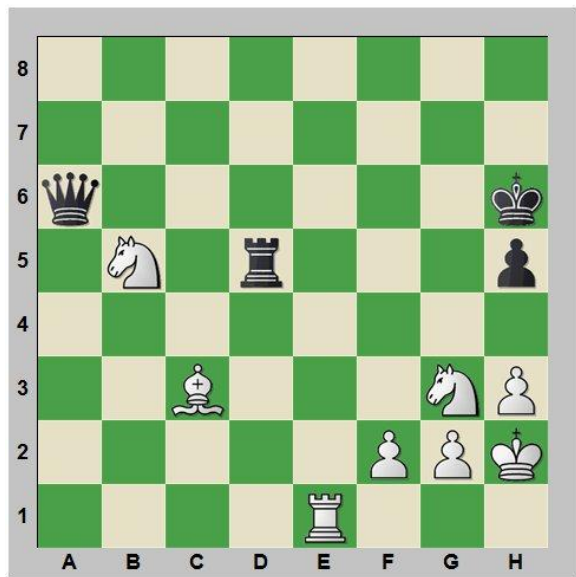
Find a Knight Fork in one move?

Fork 6



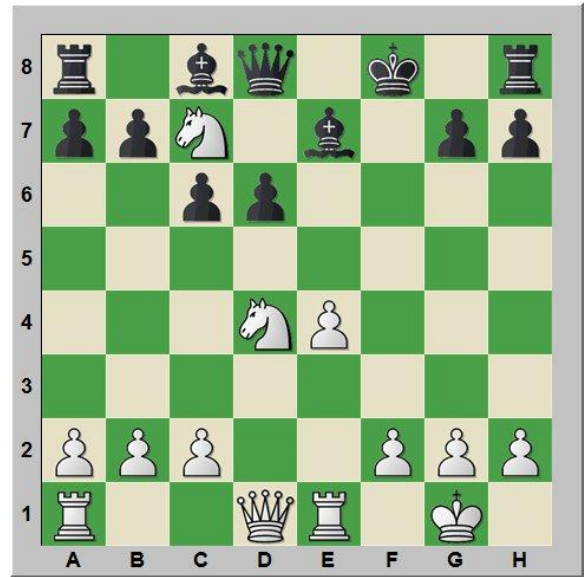
Find a Knight Fork in one move?

Fork 7



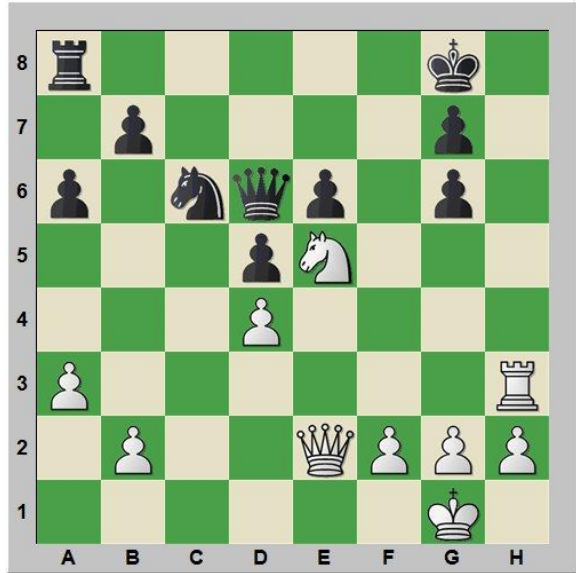
Find a Knight Fork in one move?

Fork 8



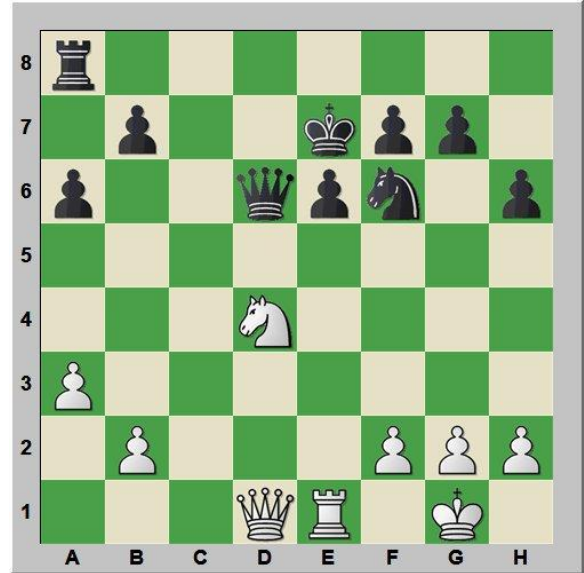
Find a Knight Fork in one move?

Fork 9



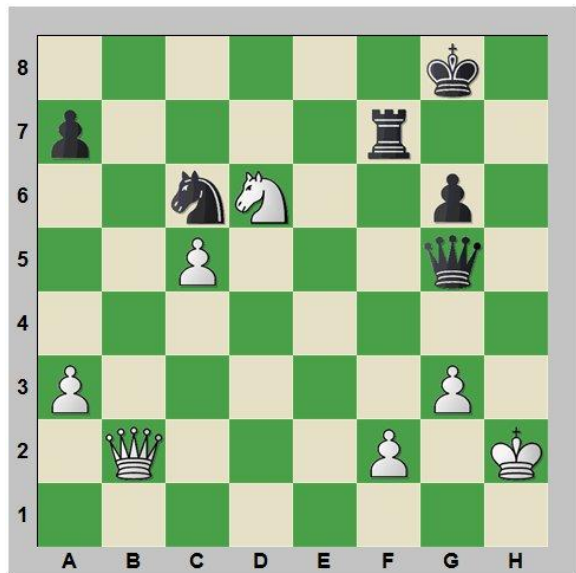
Find a Knight Fork in Two Moves?

Fork 10



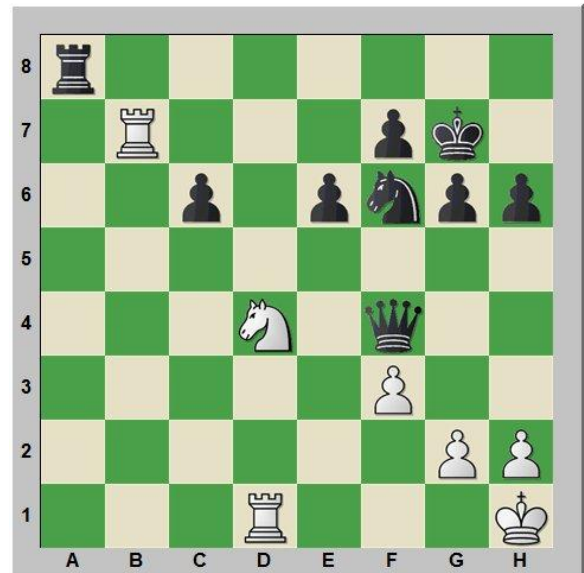
Find a Knight Fork in one move?

Fork 11



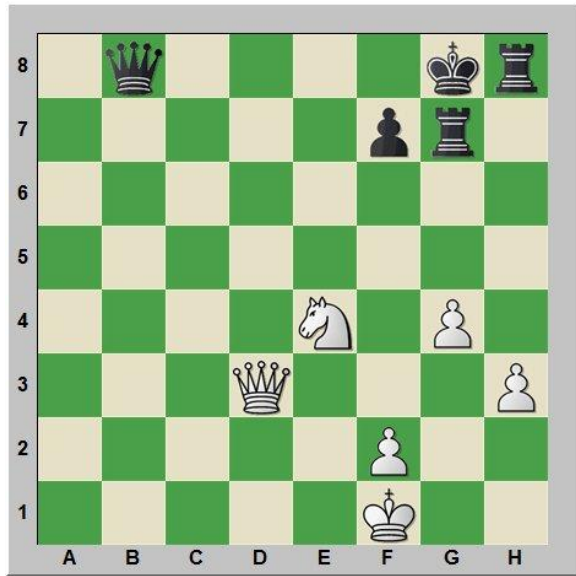
Find a Knight Fork in Two Moves?

Fork 12



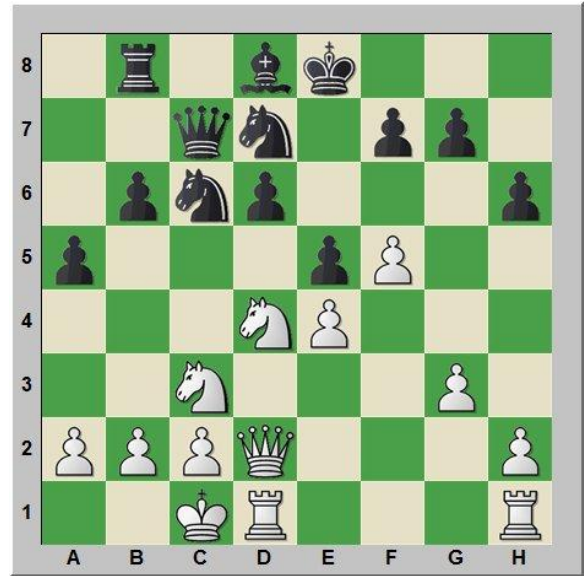
Find a Knight Fork in one Move?

Fork 13



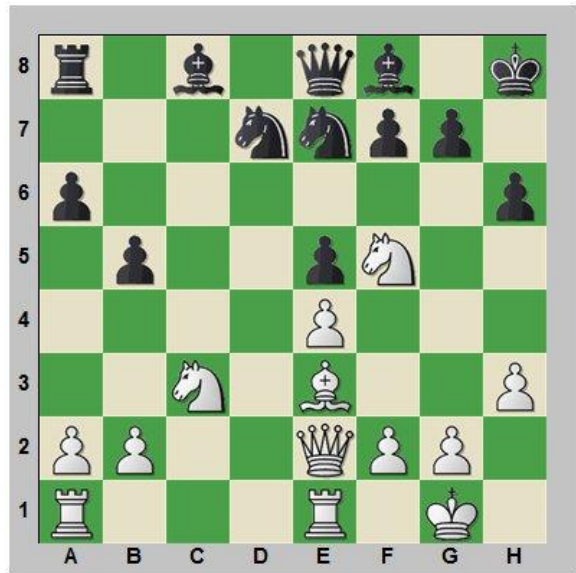
Find a Knight Fork in Two Moves?

Fork 14



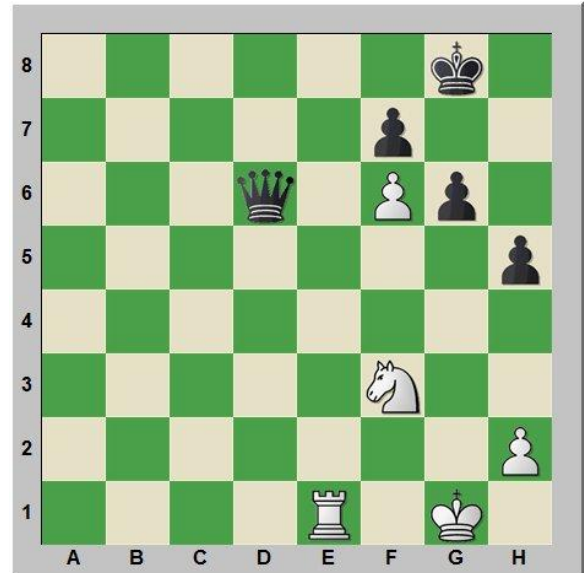
Find a Knight Fork in Two Moves?

Fork 15



Find a Knight Fork in Two Moves?

Fork 16



Find a Knight Fork in Three Moves?