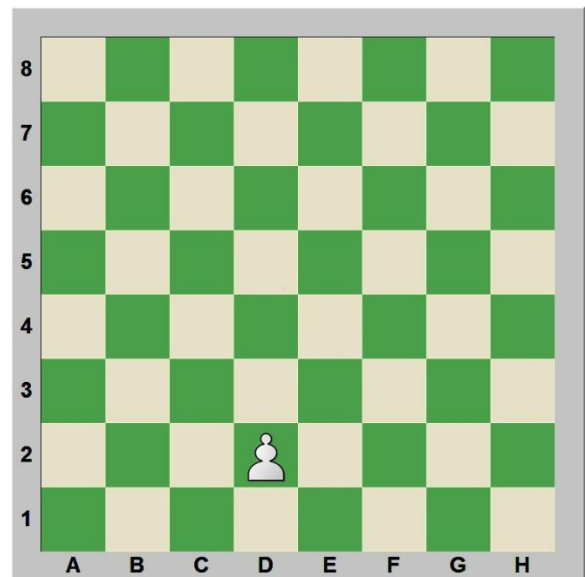


Starting position of the Pawns

White Pawns are placed on the 2<sup>nd</sup> rank

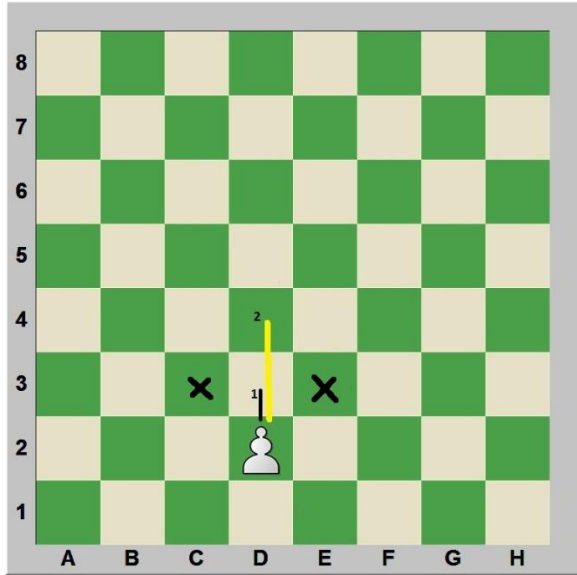
Black Pawns are placed on the 7<sup>th</sup> rank



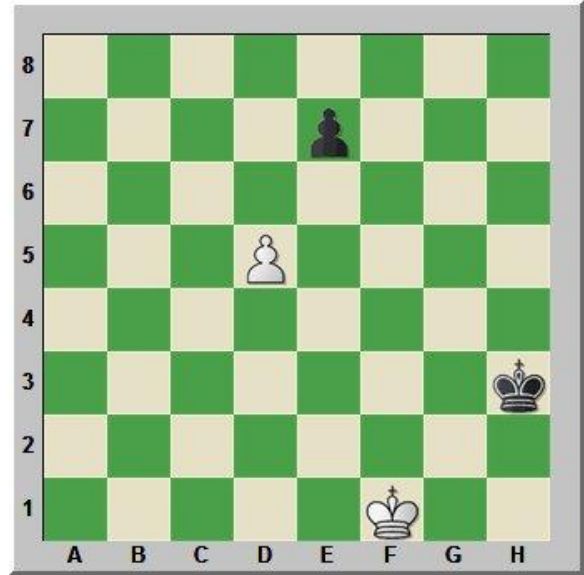
Pawn starting position

The Pawn is the only piece that captures in a different way that it moves

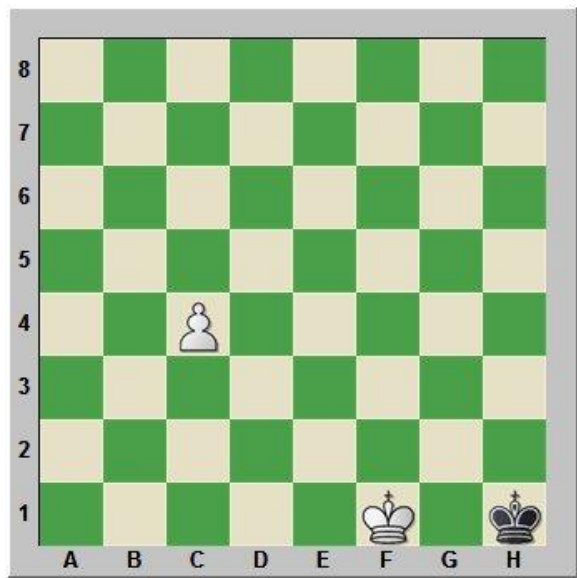
A Pawn cannot move backwards



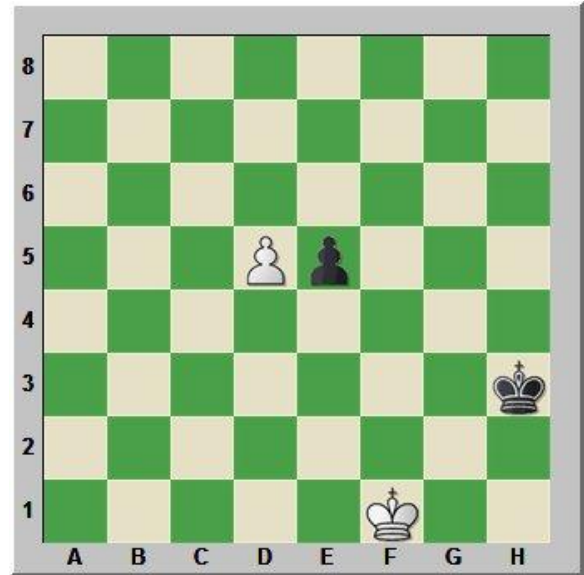
A Pawn moves straight one or two squares and capture or takes one square diagonally



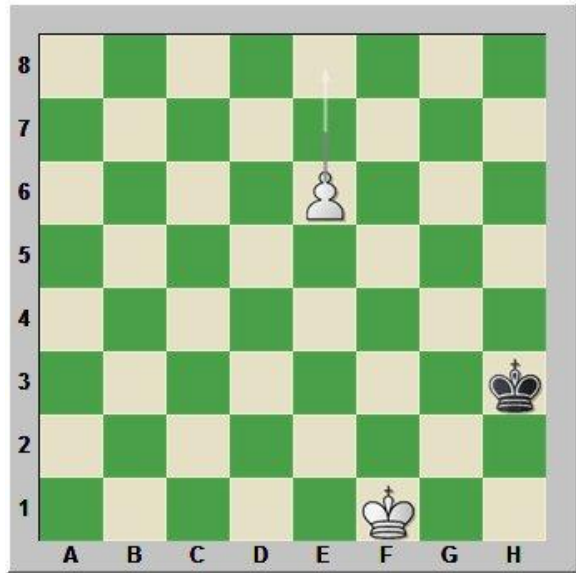
Position before En Passant



After a Pawn makes its initial move of one or two squares, the Pawn can only move up the board one square at a time



Black last move, pawn e5




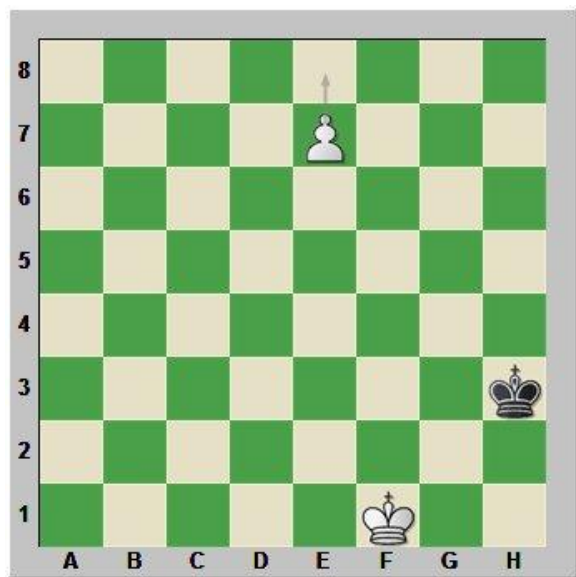
White has captured “En passant”

A Pawn is promoted to a Queen, Rook, Bishop or Knight when it gets to the eighth rank.

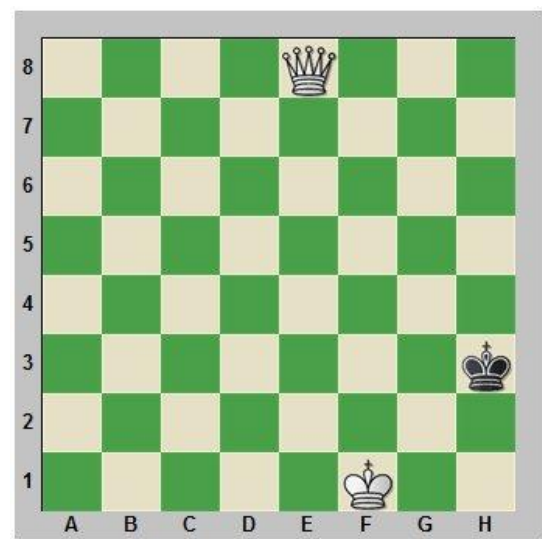


A player can choose to be one of the pieces above.

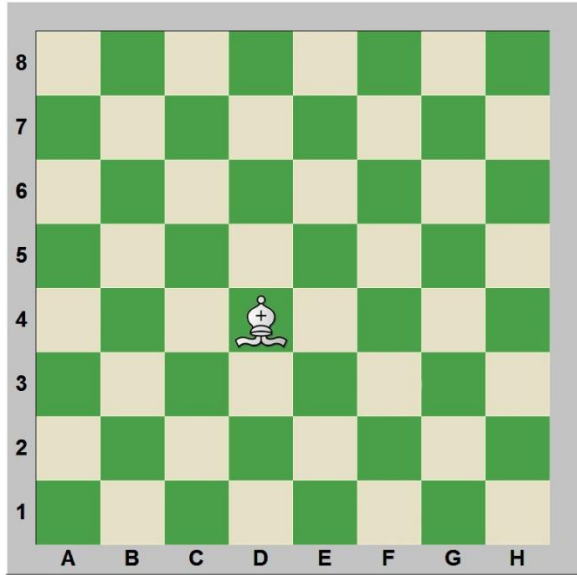
Most of the time players pick the most valuable piece - a Queen 



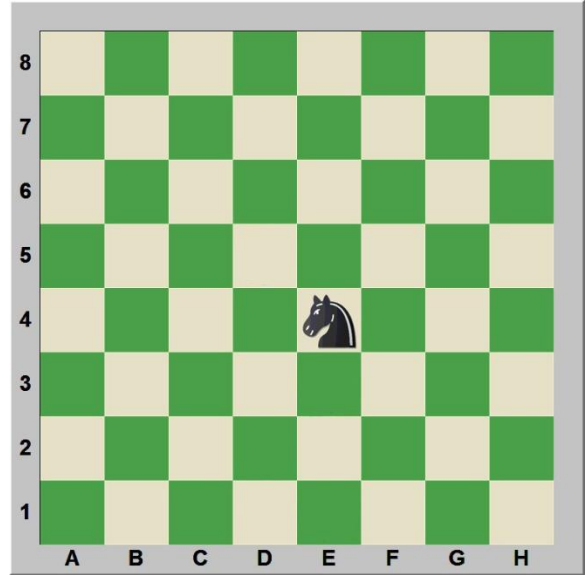
A pawn before a promotion



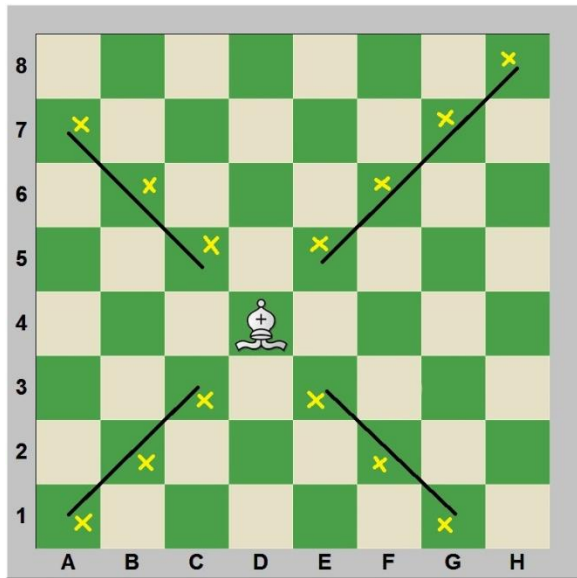
A pawn promoted to a Queen



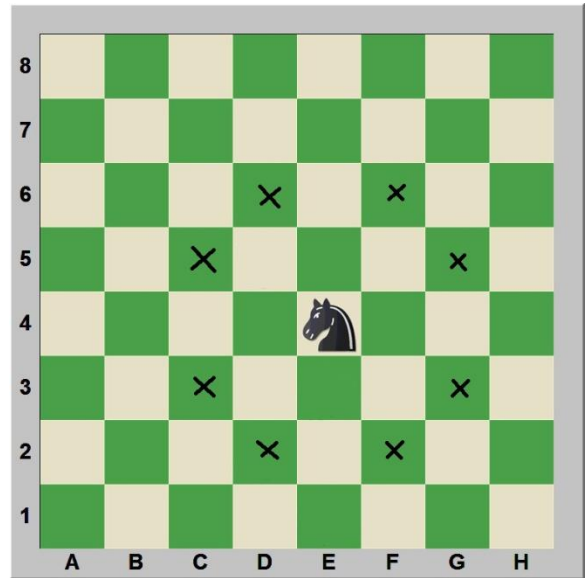
Bishop



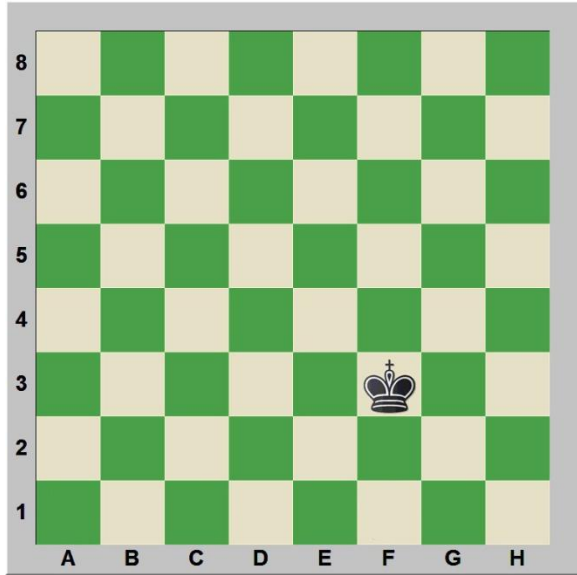
Knight



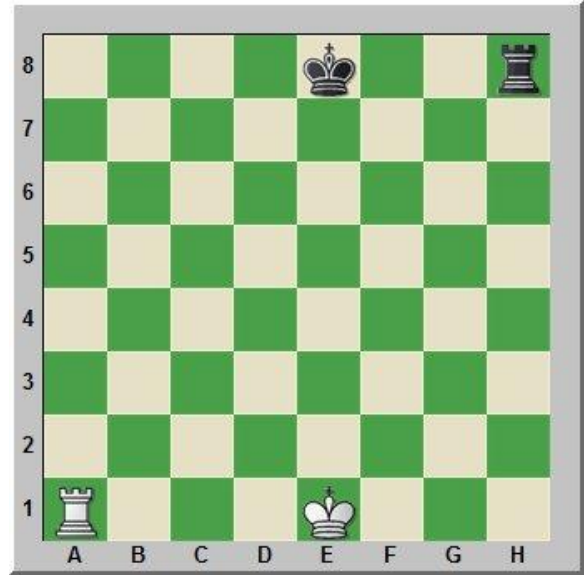
A Bishop moves diagonally and captures diagonally



A Knight can move to the “X” and take or capture by jumping over pieces. It moves one square to the side up or down and lands or take one square diagonally.



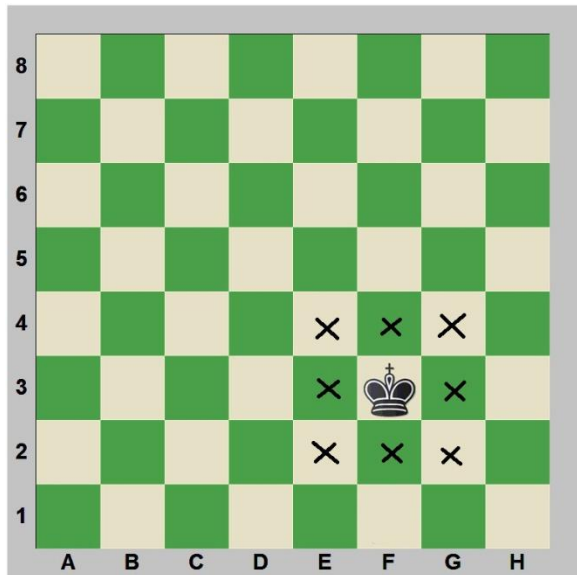
King



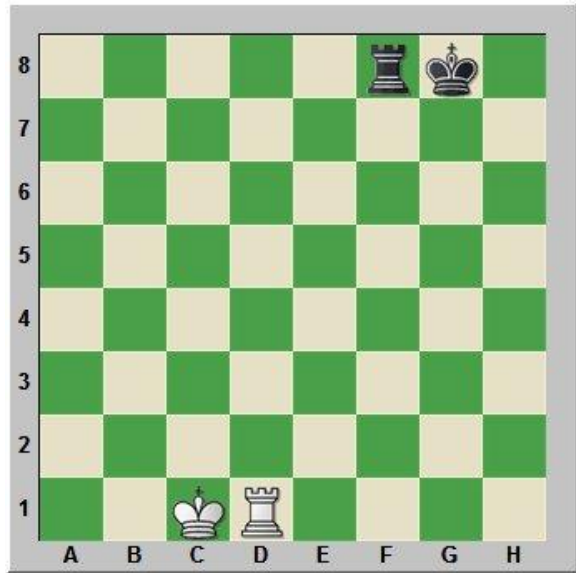
Before castling

Castling is a special move in which King and Rook combines their move.

*It is the only time when a player can move two pieces in a single turn*



A King moves and captures one square in any direction



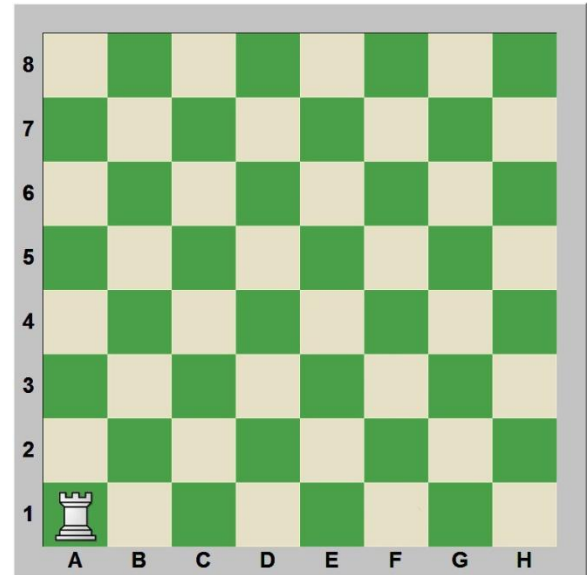
Position after white castling long and black castling short

Either player may choose castling long or short

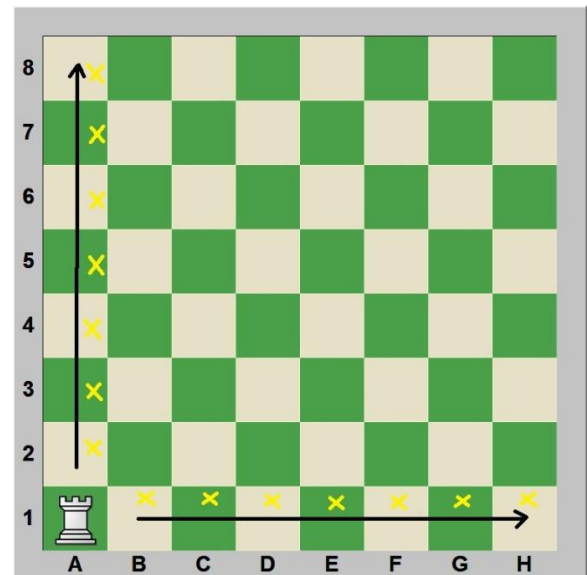
A King and Rook are the only pieces that can be used for castling

*Only when castling the King moves two squares*

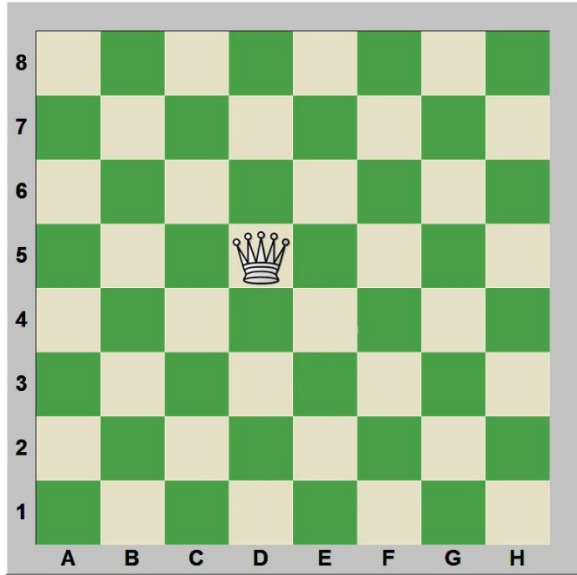
Note you cannot castle out of check. When castling, your king cannot cross an enemy “line of fire” say from a ♔, ♚ or ♛.



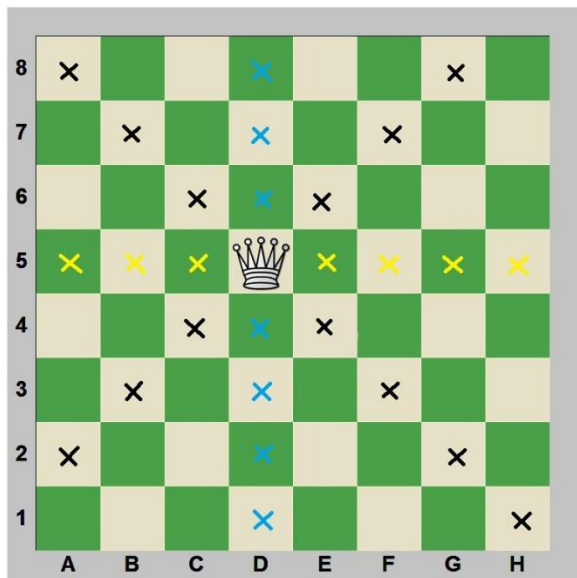
Rook



A Rook moves and captures in straight line. Rooks either move up and down on a file, or sideways along a rank.



Queen



A Queen moves and captures straight and diagonally as far as the edge of the board.