

Circle one of the choices of the player that has more material

Is the total value in points of a player's pawns and pieces on the chess board.

-  = 1 point
-  = 3 points
-  = 3 points
-  = 5 points
-  = 9 points
-  = infinity

How to count Material?













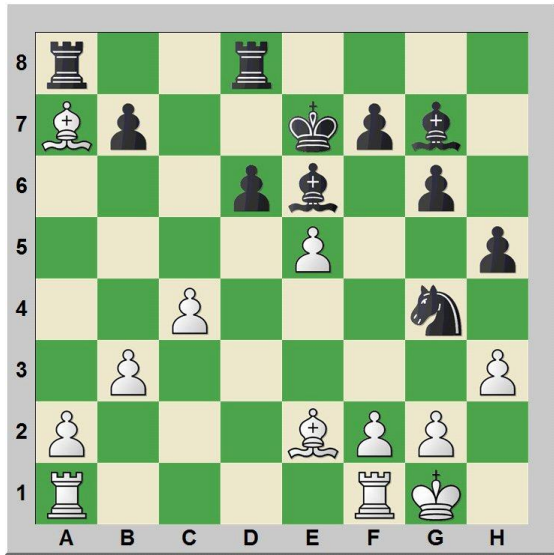
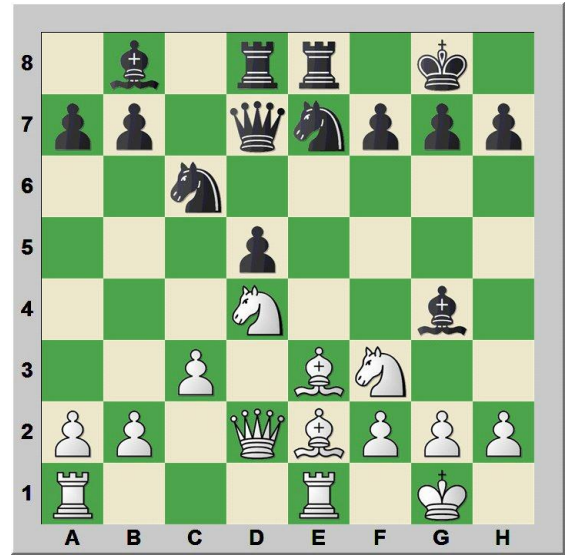
- Start by counting all light  s.
Then count all dark  s and compare to see who has the most  s.
- Count minor pieces ( s and  s), and compare who has the most.
- Now compare  s and  s.
- The final step is to total up the differences in  s,  s,  s,  s and  s to see whether material is equal, or whether White or Black has the most material, and by how many points.

Diagram 1



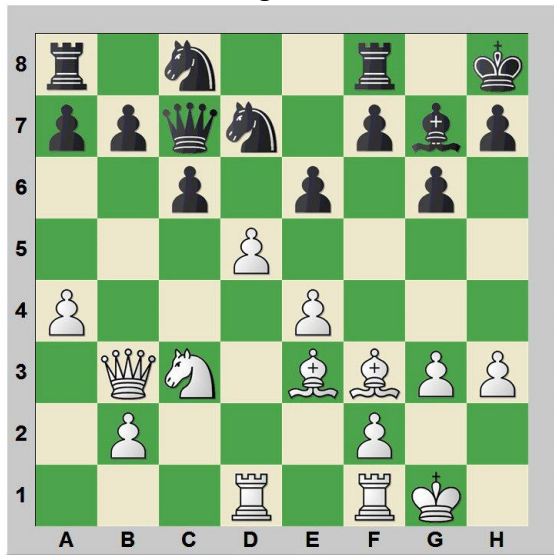
White Black Equal

Diagram 2



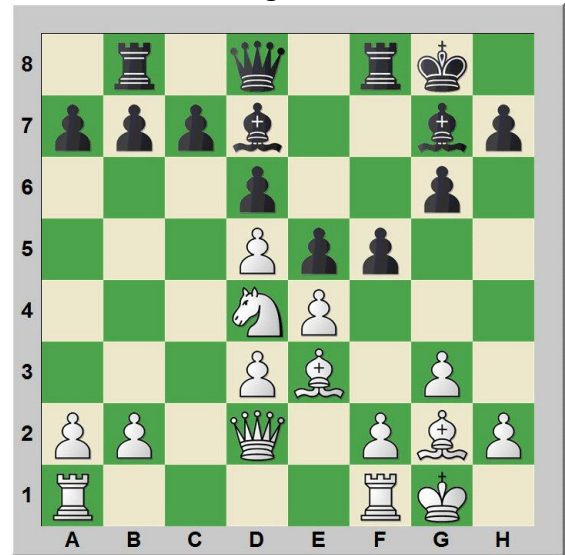
White Black Equal

Diagram 3



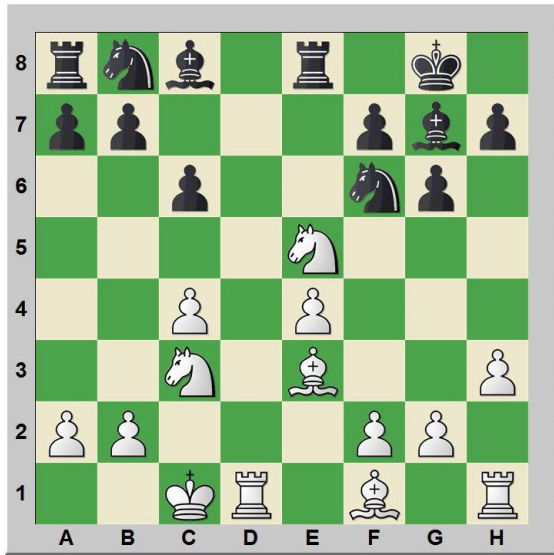
White Black Equal

Diagram 4



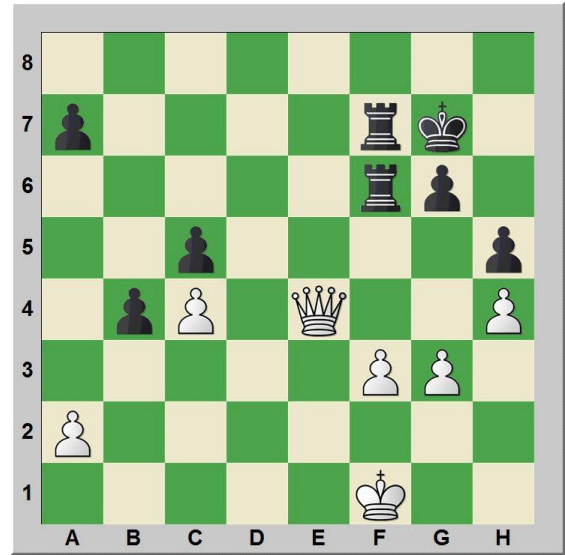
White Black Equal

Diagram 5



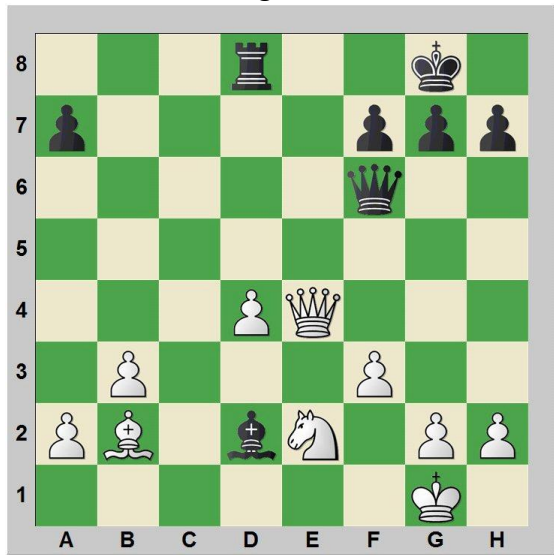
White Black Equal

Diagram 6



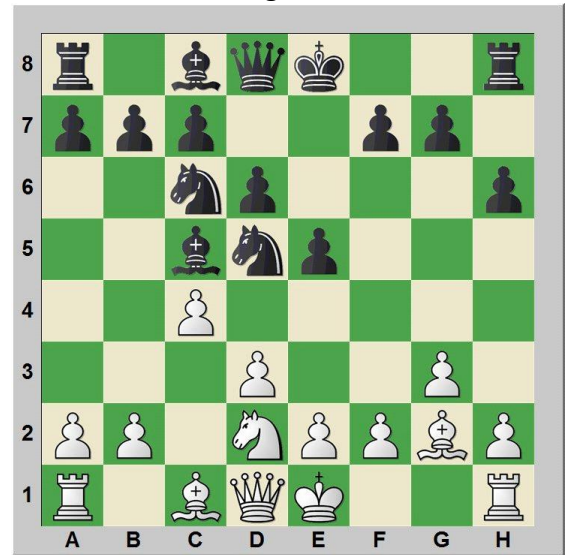
White Black Equal

Diagram 7



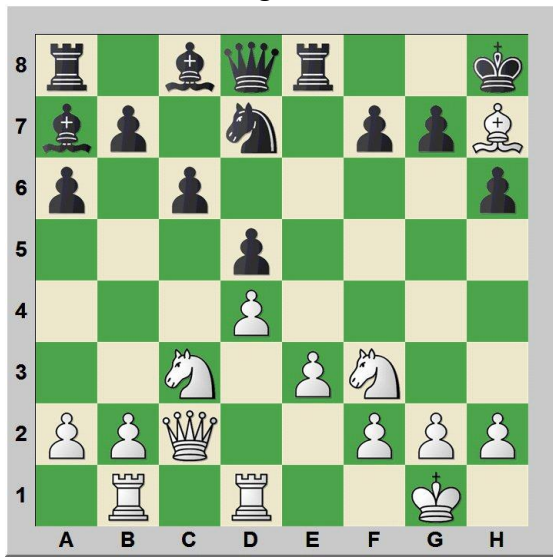
White Black Equal

Diagram 8



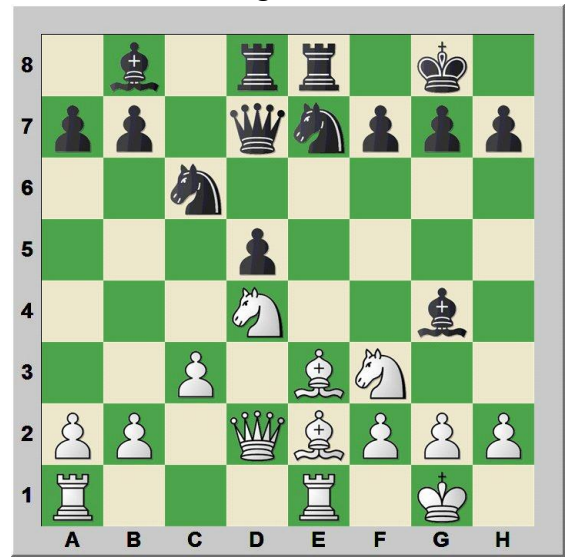
White Black Equal

Diagram 9



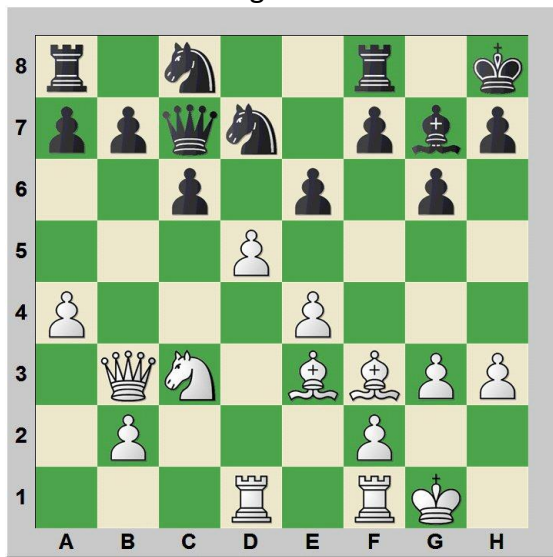
White Black Equal

Diagram 10



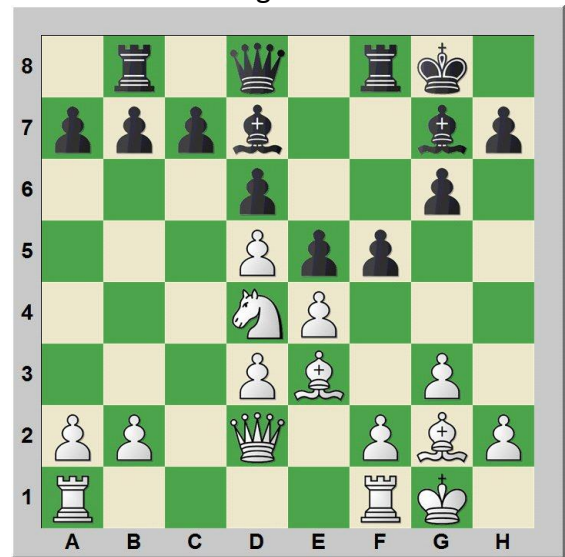
White Black Equal

Diagram 11



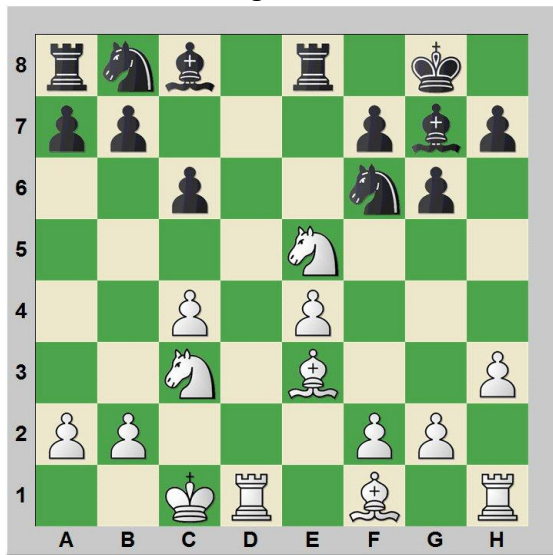
White Black Equal

Diagram 12



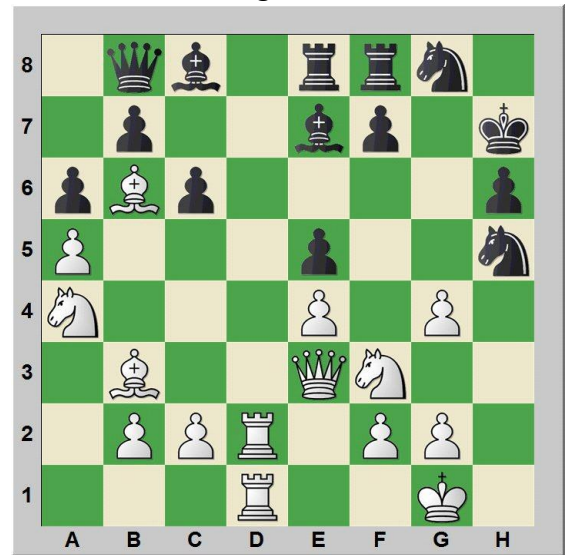
White Black Equal

Diagram 13



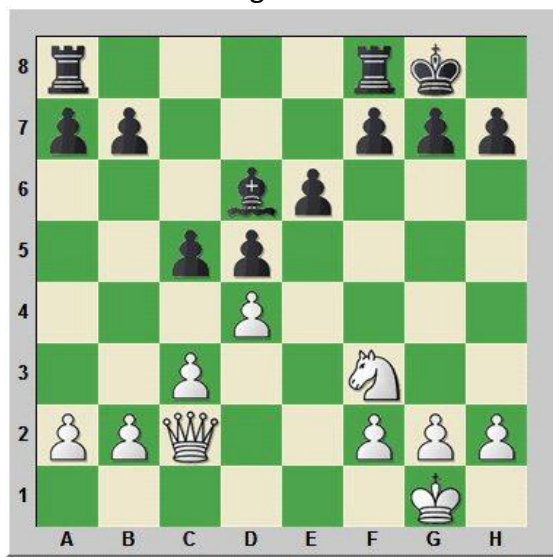
White Black Equal

Diagram 14



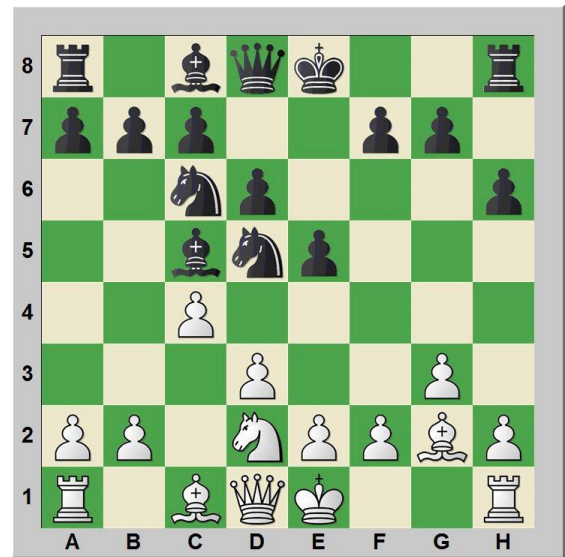
White Black Equal

Diagram 15



White Black Equal

Material 16



White Black Equal