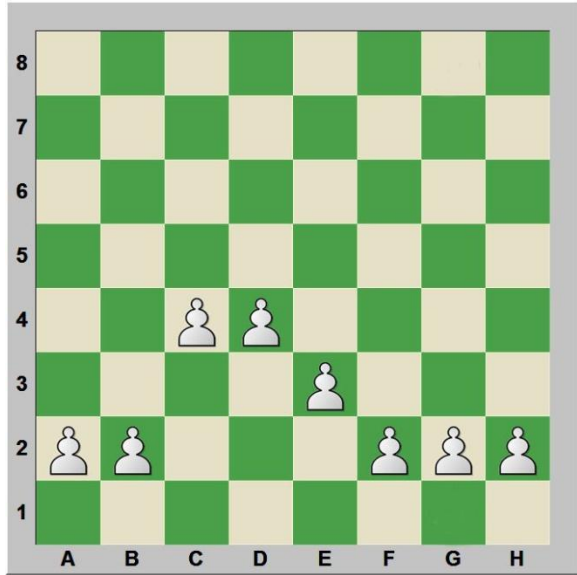


## **Pawn Structures**

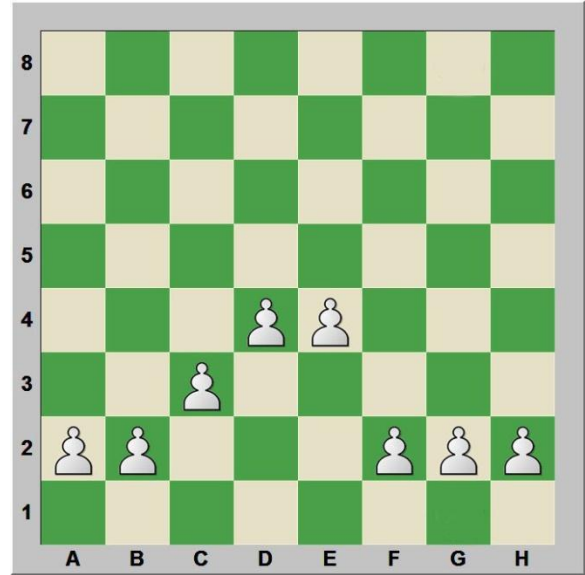
Setup the diagram position on a chessboard and try to memorize the name of each pawn structure.

“Pawns are the soul of the chess”  
Andre Philidor – 18<sup>th</sup> Century

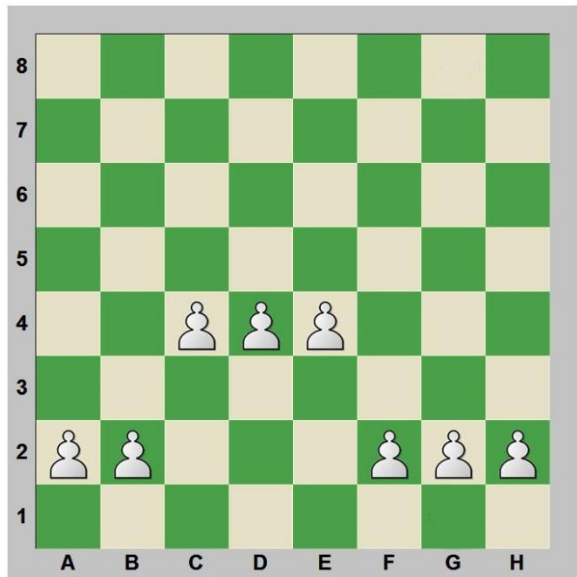
White often starts a chess game by moving his e-pawn, d-pawn, or c-pawn 2 squares.



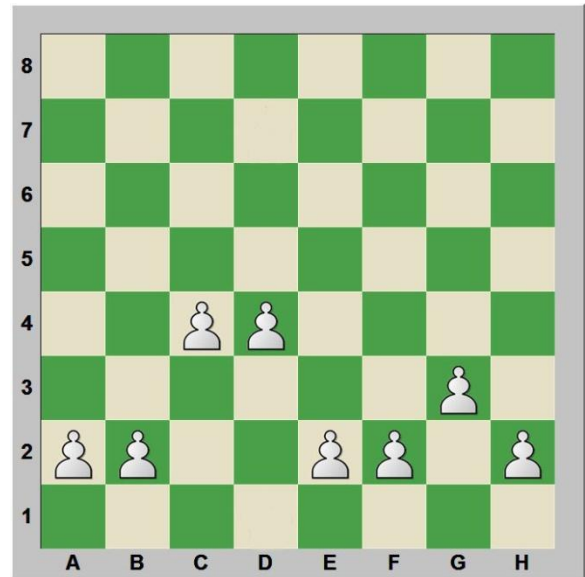
Queenside Pawn Duo - D4/C4



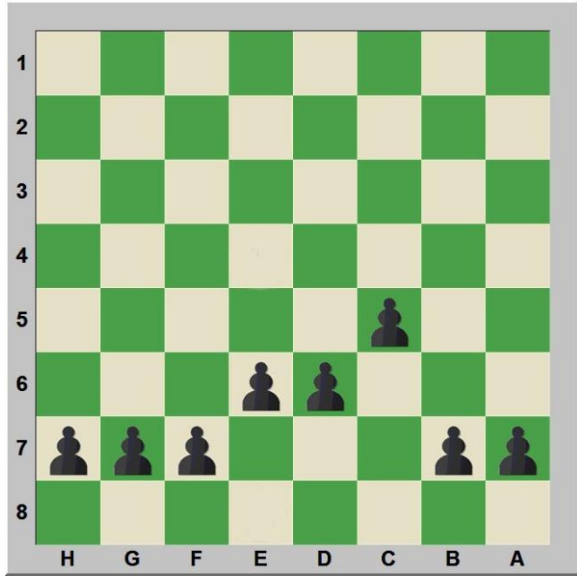
Kingside Pawn Duo - E4/D4



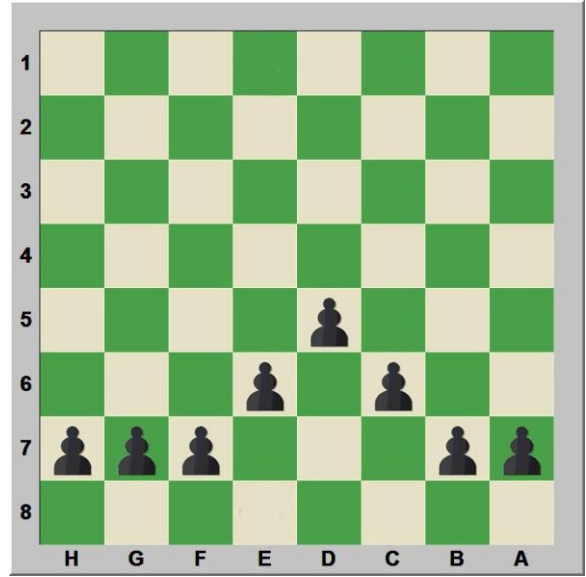
Classical Pawn Trio - C4/D4/E4



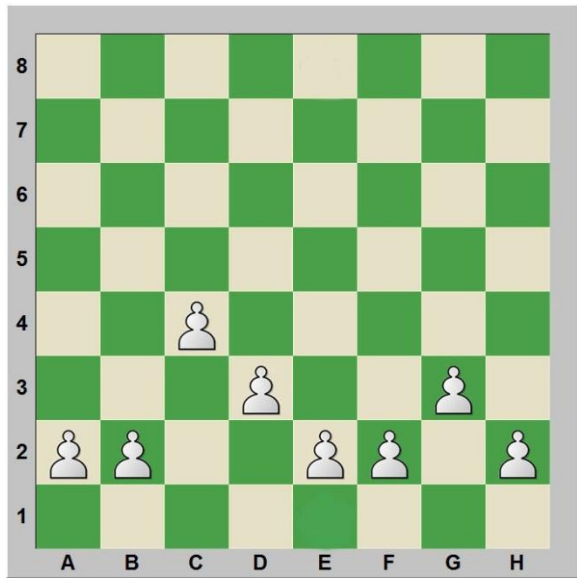
Catalan



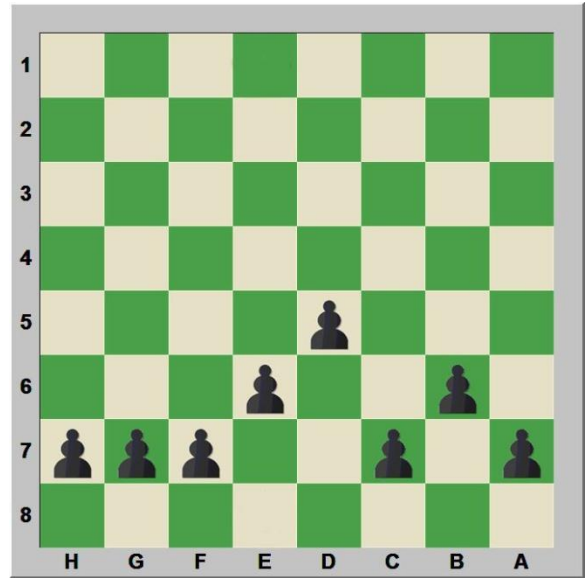
Sicilian Defense



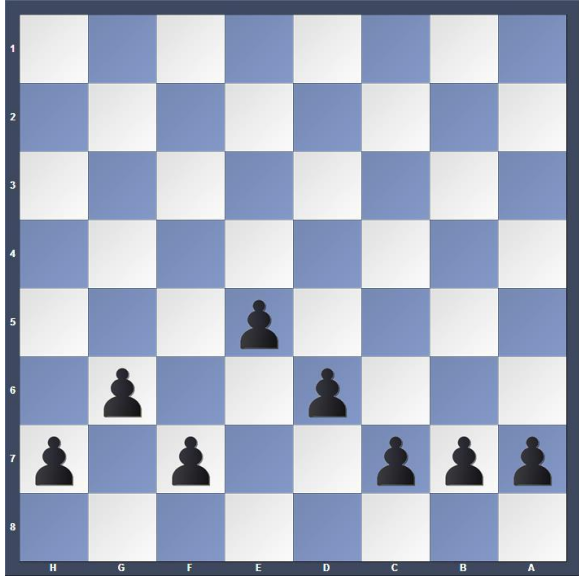
Slav Defense



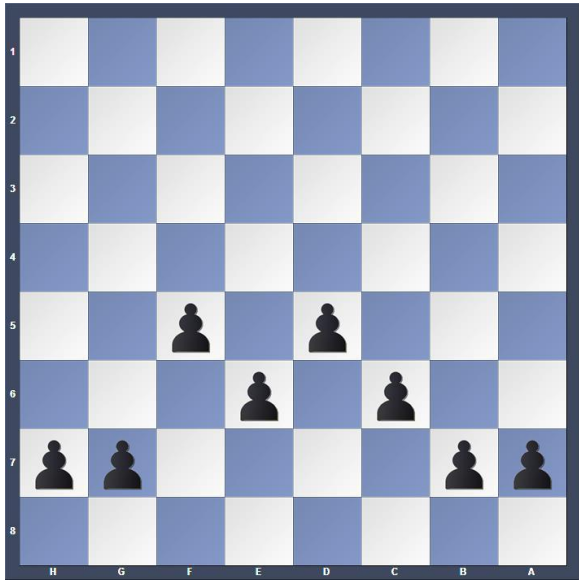
English



Queen's Indian Defense



King's Indian Defense



Stonewall Defense