

**In all the diagrams below  
FIND  
Unprotected pieces or  
Hanging Pieces**

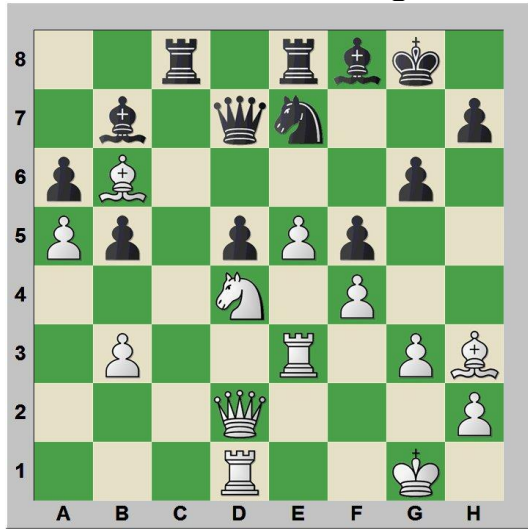
The best way to do it is, by simply looking for all the pieces that are not protected starting on the a-file an up down search and move to the b-file and so forth.

TIP

Leaving hanging pieces is pretty weak

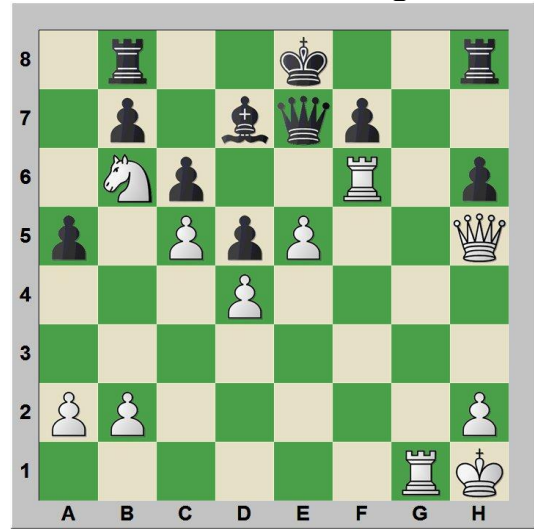


Diagram 5



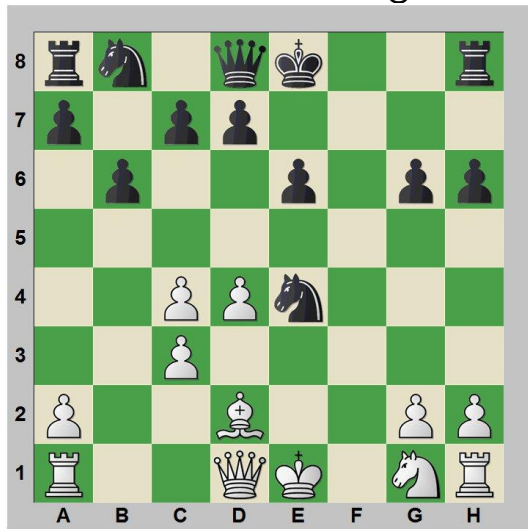
Circle (2) hanging pieces

Diagram 7



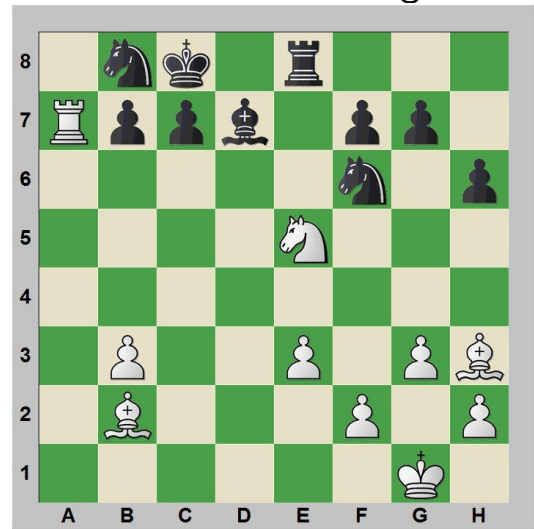
Circle (7) hanging pieces

Diagram 6



Circle (7) hanging pieces

Diagram 8



Circle (6) hanging pieces